

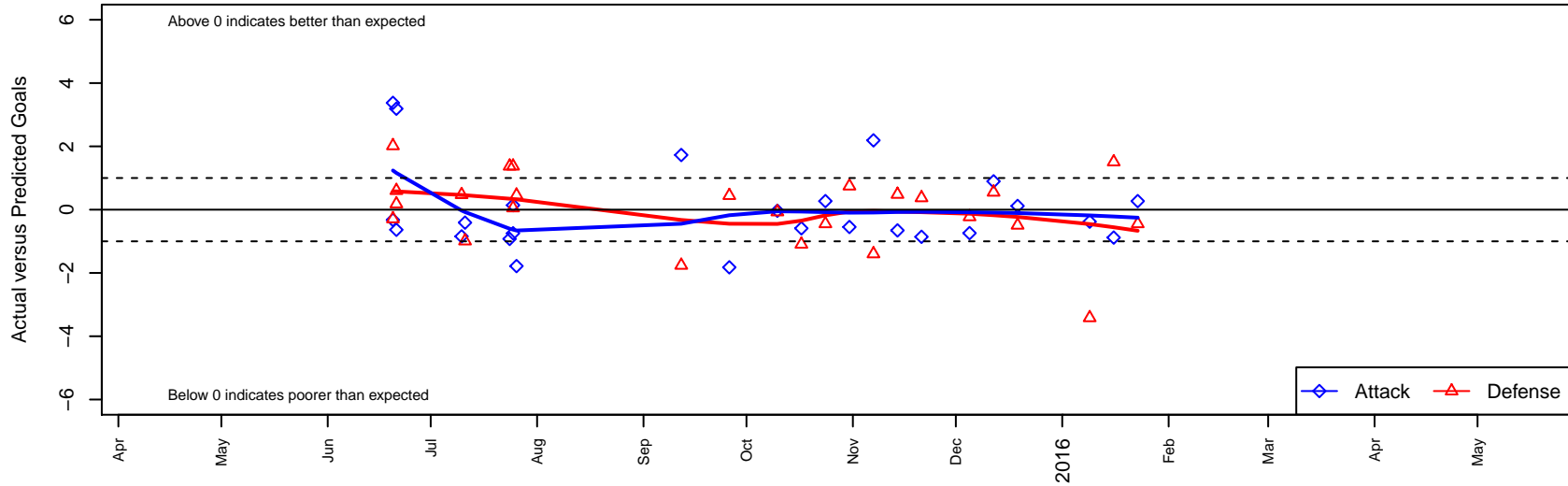
Seattle United NE Blue G01

Seattle United Regional
 Seattle, WA
 G01 total strength=911
 attack=1.21 defense=1.79
 fall league = NPSL Div 2 U14

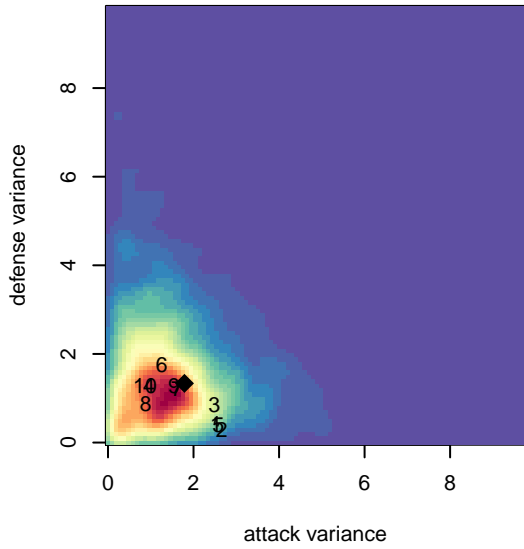
alt names used:
 Seattle United NE Blue G01
 Seattle United G01 NE Blue

Venues played:
 2015 Snohomish United Invt Silver
 2015 Seattle United Cup GU14
 2015 Crossfire Select GU14 Silver
 2015 NPSL Division 2 U14
 2015 Founders Cup G01

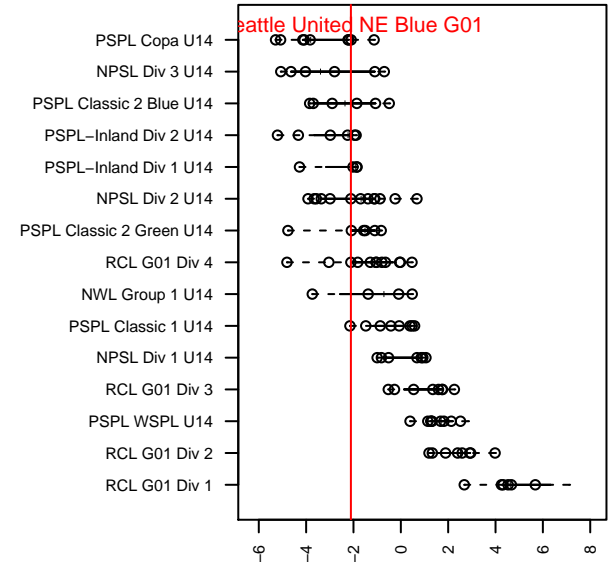
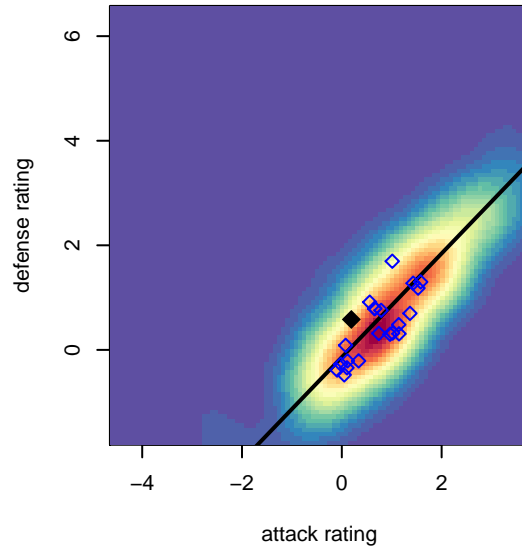
Seattle United NE Blue G01
 Dots are actual minus expected GF (blue circles) and GA (red triangles).
 Blue line is smoothed change in attack strength. Red is smoothed change in defense strength.



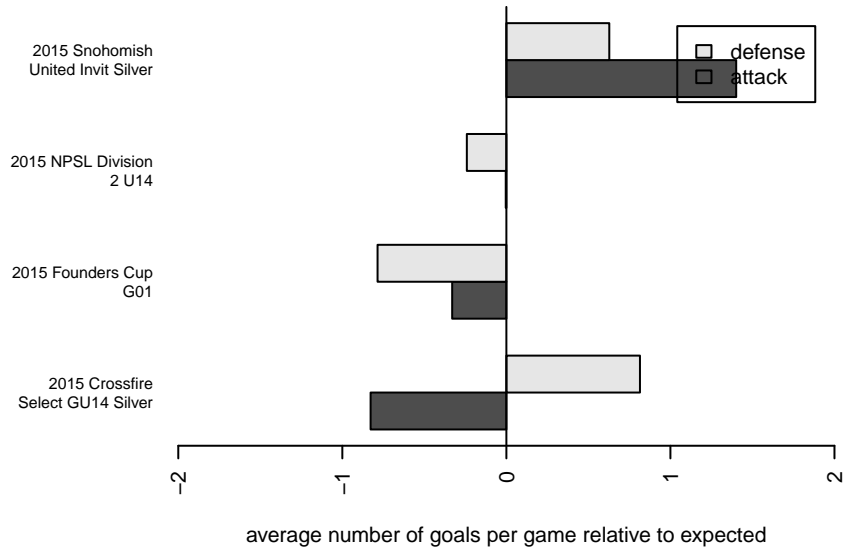
**attack and defense variance (black dot)
relative to other teams
and top 10 in region**



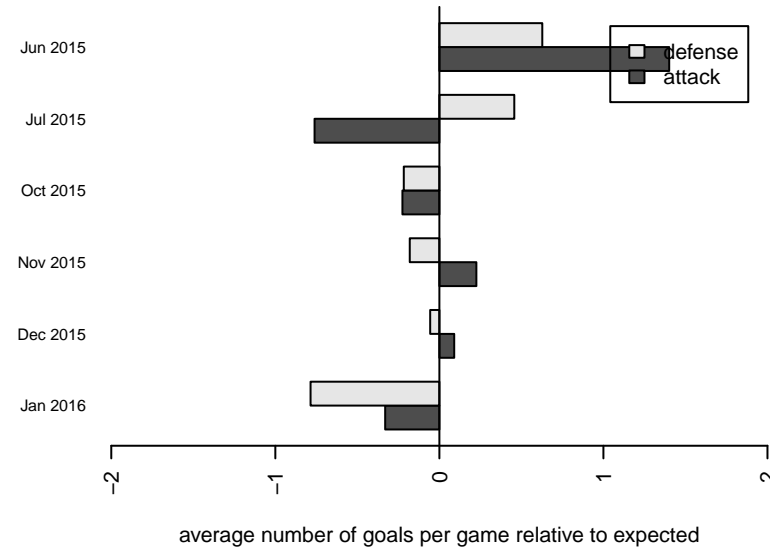
**attack and defense rating
relative to others at age
and all opponents in last 13 months**



Performance relative to 13 month average



Performance relative to 13 month average



date	home		away		venue	pred.home	pred.away
2016-01-23	Seattle United NE Blue G01	2	Whatcom FC Rangers White G01	1	2015 Founders Cup G01	1.73	0.55
2016-01-16	Kent United White G01	0	Seattle United NE Blue G01	0	2015 Founders Cup G01	1.51	0.88
2016-01-09	Crossfire Select Granston G01	6	Seattle United NE Blue G01	0	2015 Founders Cup G01	2.58	0.38
2015-12-19	Kent United White G01	2	Seattle United NE Blue G01	1	2015 NPSL Division 2 U14	1.51	0.88
2015-12-12	Mukilteo Rush G01	0	Seattle United NE Blue G01	2	2015 NPSL Division 2 U14	0.55	1.10
2015-12-05	Seattle United NE Blue G01	0	MIFC Thunder G01	2	2015 NPSL Division 2 U14	0.74	1.77
2015-11-21	Seattle United NE Blue G01	0	Seattle United W Blue G01	1	2015 NPSL Division 2 U14	0.86	1.37
2015-11-14	North Whidbey Islanders G01	0	Seattle United NE Blue G01	1	2015 NPSL Division 2 U14	0.48	1.66
2015-11-07	Seattle United NE Blue G01	4	Snohomish United Red G01	2	2015 NPSL Division 2 U14	1.81	0.60
2015-10-31	Seattle United Shoreline Blue G01	0	Seattle United NE Blue G01	0	2015 NPSL Division 2 U14	0.74	0.55
2015-10-24	Whatcom FC Rangers White G01	1	Seattle United NE Blue G01	2	2015 NPSL Division 2 U14	0.55	1.73
2015-10-17	Seattle United NE Blue G01	0	Storm King G01	2	2015 NPSL Division 2 U14	0.59	0.91
2015-10-10	Seattle United NE Blue G01	1	Lake Hills Extreme G01	1	2015 NPSL Division 2 U14	1.03	0.93
2015-09-26	Tracyton Silver G01	0	Seattle United NE Blue G01	0	2015 NPSL Division 2 U14	0.45	1.82
2015-09-12	Seattle United NE Blue G01	2	NSC Reign G01	3	2015 NPSL Division 2 U14	0.27	1.24
2015-07-26	Seattle United NE Blue G01	0	Cascade FC Green G01	0	2015 Crossfire Select GU14 Silver	1.78	0.46
2015-07-25	Seattle United W Blue G01	0	Seattle United NE Blue G01	1	2015 Crossfire Select GU14 Silver	1.37	0.86
2015-07-25	Seattle Celtic Green G01	1	Seattle United NE Blue G01	0	2015 Crossfire Select GU14 Silver	1.05	0.75
2015-07-24	Seattle United NE Blue G01	0	Crossfire Yakima G01	0	2015 Crossfire Select GU14 Silver	0.92	1.37
2015-07-11	Seattle United NE Blue G01	0	Kent United Green G01	3	2015 Seattle United Cup GU14	0.41	2.01
2015-07-10	Seattle United NE Blue G01	0	PCU SESC Dynamite G01	1	2015 Seattle United Cup GU14	0.84	1.47
2015-06-21	Seattle United NE Blue G01	5	Snohomish United Red G01	0	2015 Snohomish United Invit Silver	1.81	0.60
2015-06-21	BIFC Blue G01	1	Seattle United NE Blue G01	0	2015 Snohomish United Invit Silver	1.18	0.64
2015-06-20	Steamboat Springs G01	0	Seattle United NE Blue G01	0	2015 Snohomish United Invit Silver	2.02	0.32
2015-06-20	NWN Blue G01	1	Seattle United NE Blue G01	5	2015 Snohomish United Invit Silver	0.71	1.63